

# HVAC System

E series

中型机房解决方案

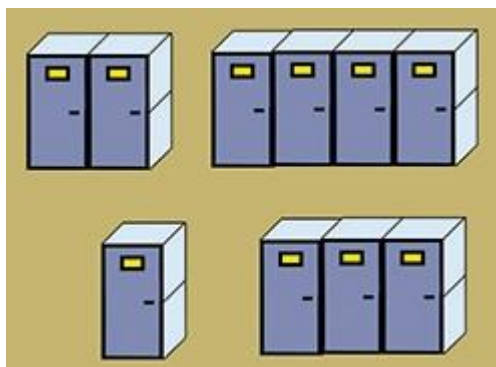


## List (目录)

Features of all series (产品特点)	1
Specifications for E series (E 系列规格)	3
The standard diameter and electrical data series (标准管径及电气技术数据)	4
Parameters for outdoor units (室外机参数)	5



## Features of all series (产品特点):



### Flexibility:

All series is designed as the modular with uniform appearance and is also supported the module combination. A variety of models can be selected by customers, and is suitable for various conditions. A wide range of optional accessories is used to adapt the variety of environmental requirements. Each unit has adjustable speed fan, using a combination of without considering the pressure problems.

### 灵活性:

模块化设计，外观更美观、一致；模块间任意组合。

多种型号可供选择，适用各种条件。

多种可选附件，适应各种环境要求。

每台机组标配配有可调速风扇，组合使用无需考虑均压问题。

### High efficiency fan (高效风机)

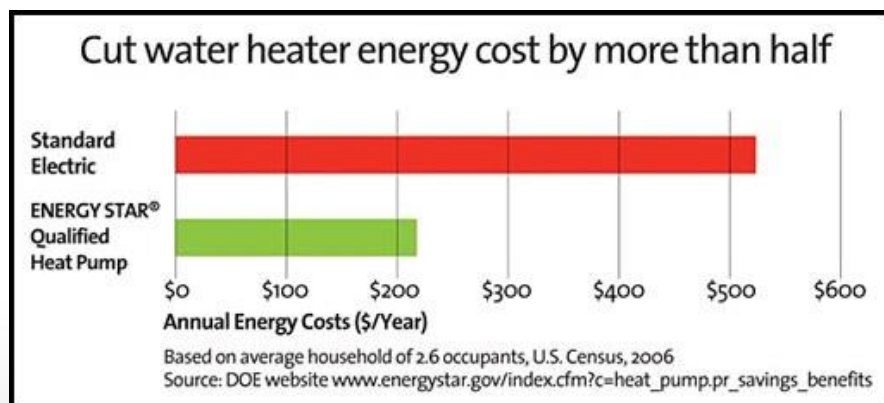
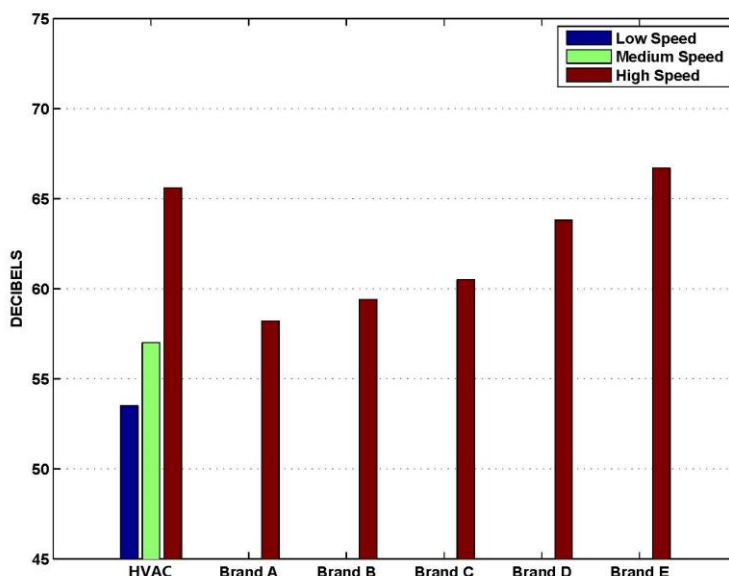
The new impeller speed high efficiency fan with static pressure between 50Pa and 450Pa combines with the high pressure chamber with special design. Low noise can be achieved for all series.

利用可变速新式叶轮高效风机，静压可在 50Pa~450Pa 之间调节，结合特殊设计的大静压室，使得系列空调低噪音得以实现。

### Energy saving (节能)

Due to the use of high efficiency fan and a scroll compressor, the power consumption for all series is greatly reduced (35% lower than traditional models). The operation and repair cost are low. All series is also supported different types of refrigerants (R22/R407c/R410a/R134a).

由于使用高效风机和涡旋式压缩机，使得所有系列空调功耗大大降低（比传统空调低 35%），运行及维修费用低。所有系列也支援不同类型的制冷剂 (R22/R407c/R410a/R134a)。



## Smart control

Each module consists of a new microcomputer controller. Multi module unit can realize mutual linkage and program control without any additional devices. The micro controller can realize the remote network.

### 智能化控制

每个模块均由新型微电脑控制器控制。多模块机组无需增加任何设备即可实现互相联动及程序控制，通过微电脑控制器即可实现远程联网。



## Installation and repair easily

The mean time for maintenance is short and the unit is disassembly simple. Unit's side without reserved any extra space saves the space for installation. Humidification adopts detachable electrode humidifier with automatic washing function. The heater adopts third-grade electric heating. The air outlet is equipped with stable air flow device.

### 安装维修简单方便

完全全正面维护，部件拆卸且维修简单，非常短的平均故障修复时间。机组侧面无需预留空间以节省安装空间。加湿采用可拆式电极加湿且带自动冲洗功能，加热器采用三级电加热，出风口标配风流均流器。



## Environmental protection

All series using recycled industrial materials plays a positive role in environmental protection. Sandwich type panel structure, the middle of flame retardant, heat insulation, and noise reduction material, provide the fire performance of A0 class.

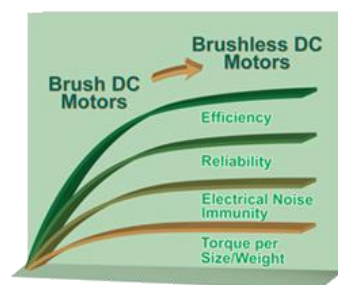
### 环境保护

系列采用可循环使用的工业材料，对环境保护起着积极的作用。三明治夹层式面板结构，中间加阻燃隔热降噪材料，提供具有 A0 级防火性能。



## Specifications for E series (E 系列规格):

Direct expansion air cooling / water cooling (直接膨胀风冷、水冷型):						
Air flow: below, above (送风方式: 下送风、上送风)						
Model (型号)		E08	E14	E16	E17	E18
<b>Characteristics (性能)</b>						
Total cooling cap. (总冷量)	kW	27.9	49.0	56.8	57.9	62.8
Humidity cap. (湿冷量)	kW	25.6	49.0	55.6	55.4	57.2
Hud. Heat ratio (湿热比)		0.92	1.00	0.98	0.95	0.91
Compressor Q. (压缩机数量)	n	1	1	1	2	2
Fan Q.(风机数量)	n	1	2	2	2	2
Wind rate (风量)	m <sup>3</sup> /h	6640	14800	14700	14800	14700
Electrode (电加热)	kW	6	6	6	6	6
Max. Humidification (最大加湿量)	kg/h	9.0	9.0	9.0	9.0	9.0
Pressure (静压-上/下)	Pa	20/50 3-step adjustable (三挡静压可调)				
Noise (噪音-下送风)	dB(A)	54.4	58	60	59	61
Length (长度)	mm	1200	1750	1750	1750	1750
Width (宽度)	mm	850	850	850	850	850
Height (高度)	mm	1800	1800	1800	1800	1800
Weight (净重)	kg	270	600	620	635	650



### Advantages: (优点)

- Pluggable fan (插拔式风机)
- Brushless direct drive type (无碳刷直接驱动式)
- Electrical parts inside the crankcase of fan (电器部分包含于风机轴箱中)
- Adjustable speed without transformer (速度调整无需变压器)
- No inverter for adjustable speed (无逆变速度调整)
- High speed air blower at any speed to maintain high efficiency (高速风机在任何速度下均保持高效)
- Power up to 7 kW above (功率可达 7kW 以上)
- Water-cooled condenser (水冷冷凝器)
- An extra water-cooled coil connected to a dry type condenser (另加的冷水盘管与干式冷凝器连接)
- When the outdoor temperature is lower than indoor, it still can achieve the energy saving. (当室外温度低于室内时, 仍可获得节能的冷量)
- Mixed DX+FC operation at the same time (直接膨胀型加自然冷却型可同时运行)
- The module can be moved vertically or horizontally (pneumatic compression). (模块可直立或水平搬(已充气加压))
- The wind direction for all models can be changed in the field for installation. (所有尺寸的模块送风方向均可现场转换)



## The standard diameter and electrical data series (标准管径及电气技术数据):

Model (型号)	Tube diameter for air (气管直径) (mm)	Tube diameter for liquid (液管直径) (mm)	Running current (运行电流) FLA(A)	Current protection (断路器保护电流) IΔ n=0.3A(400V)	Min. cable diameter (最小电缆线直径) (mm)
S03/S04/S05/W03/W04/W05	12×1	12×1	16.9	32A	6
S07/W08	16×1	12×1	17.5	32A	6
S10/W10	16×1	12×1	18.5	32A	6
S12	16×1	12×1	20	32A	6
S13/W13	18×1	16×1	22	32A	6
S16/S17/S18/W16/W18	18×1	16×1	24	32A	10
S20/S21/W21	18×1	16×1	28	50A	10
S23/W23	18×1	16×1	30	50A	10
S25/M25/W26	22×1	18×1	31	50A	10
S29/M29	22×1	18×1	43.1	50A	10
M32	22×1	18×1	45.2	50A	10
M34	18×1	16×1	45.4	50A	16
M35	28×1	22×1	47.9	63A	10
M41	28×1	22×1	52.7	63A	16
M42	22×1	18×1	46.8	63A	16
M47	28×1	22×1	57.5	63A	16
M50	22×1	18×1	64.5	80A	25
M58	22×1	22×1	68.3	80A	25
M66	28×1	22×1	69.3	80A	25
28A/W/F/D/H	22×1	18×1	45.2	50A	10
34A/W/F/D/H	28×1	22×1	47.9	50A	10
40A/W/F/D/H	28×1	22×1	52.7	63A	16
26A/W/F/D/H	18×1	18×1	40.2	50A	16
32A/W/F/D/H	18×1	18×1	44.4	50A	16
42A/W/F/D/H	22×1	18×1	46.8	63A	16
46A/W/F/D/H	22×1	18×1	55.2	63A	25
55A/W	22×1	18×1	69.3	80A	25
65A/W	28×1	22×1	69.3	80A	25
81A/W	28×1	22×1	75.2	100A	35
99A/W	28×1	22×1	83.6	100A	35

P.S. The diameter of gas or liquid tube and electrical parameters will be adjusted in accordance with local regulations. The list above is for reference only.

附:气/液管径及电气参数会依照当地法规规定而调整, 上述表列仅供参考。



## Parameters for outdoor units (室外机参数):

Model (型号)	Length (长度) (mm)	Width (宽度) (mm)	Height (高度) (mm)	Weight (重量) (kg)
S03/S04/W03/W04	780	260	540	45
S05/S07/W05	840	285	610	50
S08/W08	830/880	310/360	710/800	52/55
S10/W10	880	360	800	55
S12/S13/W13	830/930	310/390	1260/1270	60/64
S16/S17/S18/W16/W18	930	390	1270	68
S20/S21/S23/S25/M25/P06/W21/W23/W26	1220	450	1180	80
S20/S21/S23/S25/M25/P06/W21/W23/W26 (Optional)	940	1120	935	83
S29/M29/P07/P08/P09/E08/26U/28U	1220	450	1180	95
S29/M29/P07/P08/P09/E08/26U/28U (Optional)	940	1120	1195	99
M32/M34/M35/P10/32U/34U	1500	450	1180	130
M32/M34/M35/P10/32U/34U (Optional)	940	1120	1195	133
M41/M42/Q11/P11/E14/42U	1500	450	1425	149
M41/M42/Q11/P11/E14/42U (Optional)	1190	1190	1425	154
M47/M50/Q14/P16/40U	2165	450	1180	168
M47/M50/Q14/P16/40U (Optional)	1880	1120	1030	172
M58/P17/E16/E17/46U/55U	2165	450	1180	184
M58/P17/E16/E17/46U/55U (Optional)	1880	1120	1030	189
Q17/E18	2400	450	1180	246
Q17/E18 (Optional)	1880	1120	1195	252
M66/Q19/65U	2640	450	1180	260
M66/Q19/65U (Optional)	1880	1120	1195	268
L83U	2820	1120	1030	281
Q22/Q25U	2820	1120	1195	293
L99U/Q29U	2820	1120	1195	311

P.S. (备注): The parameters for non-standard products do not shown in here, if necessary, please contact the manufacturer. The new design of components and structures for the unit will change depending on the actual situation.

非标准型号机型参数不列在此处，如果有需要，请和生产厂家联系。新机型所使用的元件及机组内部的设计会根据实际状况而有所变动。





Office: No. 125, Zhongxing Rd., Bantian,  
Shenzhen City, Guangdong  
Address 1: Economic Development Zone,  
Futian Free Trade Zone, Shenzhen City,  
Guangdong  
Address 2: CBOS Industrial Park, Dongguan,  
Guangdong  
Phone: +86-755-89202131  
Fax: +86-755-89202105  
<http://www.hirossz.com>  
Email: hiross@hiross.org

Agency ( 经销商 ):

辦公點: 深圳坂田中興路 125 號  
廠 1 深圳: 深圳福田保稅區經濟開發區  
廠 2 東莞: 廣東東莞冷博工業園  
電話: +86-755-89202131  
傳真: +86-755-89202105  
<http://www.hirossz.com>  
電子郵件: hiross@hiross.org

